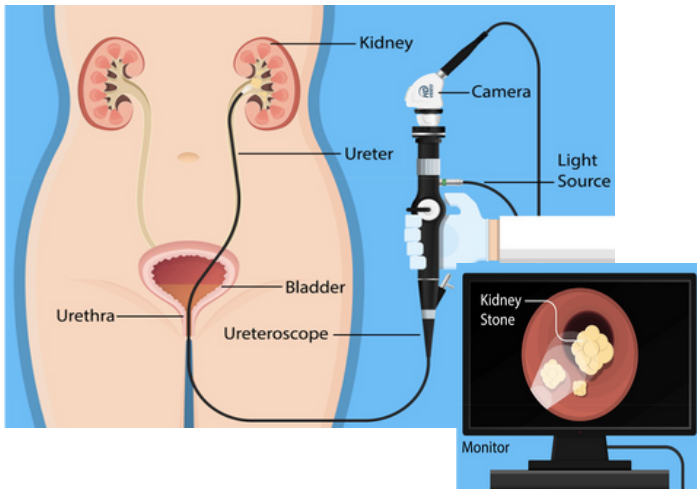


Ureteroscopy (URS)

A **small telescope/camera** is inserted into the bladder and urinary tract to look at the stone. Your urologist then breaks and/or removes your stone with a laser.

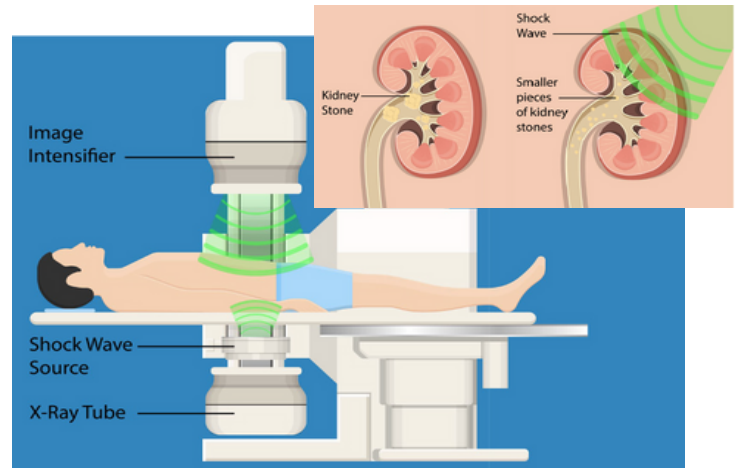
Some pieces may pass in the urine over time as well.



Shockwave Lithotripsy (SWL)

A machine makes **sound waves** that break up stones into smaller pieces from outside the body. Pieces of stone are then passed in the urine over time.

SWL can treat most kidney stones, but sometimes it is not recommended.



Treatment Differences

	URS	SWL
Best Used for	Stones in the ureter, multiple stones, larger stones, and harder stones	Stones in the kidney and upper ureter, only 1 stone and softer stones
Effectiveness	More effective: Higher chance of being stone free (no stones left)	Less effective: Lower chance of being stone free (no stones left)
Number of Procedures	Only one procedure usually required	Can require other procedures
Risk of Complications	Both URS and SWL have low overall risk of complications	
	Low risk	Lowest Risk
Pain	Patients describe both URS and SWL as somewhat painful	
	Higher chance of needing a stent making it more painful	Associated with the least amount of pain according to patients
Recovery Time at Home	Both URS and SWL require time to recover, this varies by patient	
	Generally, recovery is longer (3 to 5 days)	Generally, recovery is shorter (1 to 3 days)

Your Treatment Goals

Please indicate (check ✓) how important the following treatment goals are to you

	Not Important	No Preference	Important
Effectiveness - The chance that all of your stone will be removed			
Number of Procedures - The chance that your treatment will be successful with only one procedure			
Risk of Complications - The chance that you will experience a complication			
Pain - The amount of pain associated with the procedure and your recovery			
Recovery Time - The amount of time you need to recover after the procedure			

Treatment Goals Most Important to You

Please circle THE MOST IMPORTANT treatment goal to you

Effectiveness	Number of Procedures	Risk of Complications	Pain	Recovery Time
<i>Please circle up to 2 other important treatment goals to you</i>				
Effectiveness	Number of Procedures	Risk of Complications	Pain	Recovery Time



A nonprofit corporation and independent licensee of the Blue Cross and Blue Shield Association

This document is designed for adult patient education. Support for MUSIC is provided by Blue Cross Blue Shield of Michigan as part of the BCBSM Value Partnerships program. Although Blue Cross Blue Shield of Michigan and MUSIC work collaboratively, the opinions, beliefs and viewpoints expressed by the authors do not necessarily reflect the opinions, beliefs, and viewpoints of BCBSM or any of its employees.

For additional information regarding this informational pamphlet or the Michigan Urological Surgery Improvement Collaborative, please contact us at:

MUSIC Coordinating Center



www.musicurology.com



musicurology@umich.edu

