

Tumor Complexity Guide

Document it.

	1 Point	2 Point	3 Point	Total
R	Small (T1a)	In between (T1b)	Big (T2)	_____(R Point)
E	Mostly exophytic	In between	Mostly all endophytic	_____(E Point)
N	Cortical	Collecting system may be entered during PN	Collecting system will be entered during PN	_____(N Point)
L	Polar	In between	At hilum	_____(L Point)

Complexity Total = Sum of all Points (R+E+N+L)

Low: 4-6

Intermediate: 7-9

High: 10-12

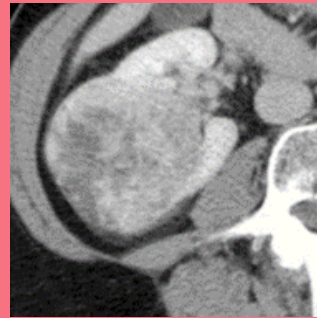
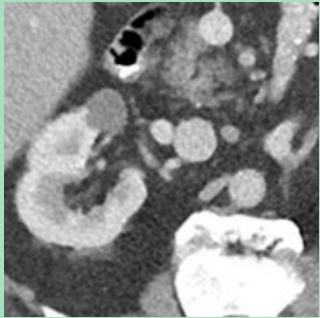


R: Radius

<4cm
(T1a)

4-7cm
(T1b)

>7cm
(T2)



1 Point

2 Point

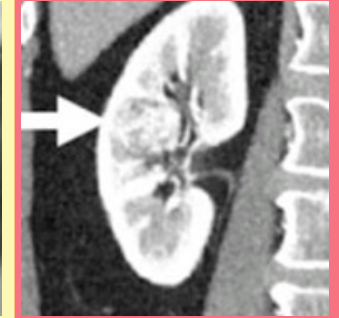
3 Point

E: EXO/Endo Properties

>50%
(Mostly
Exophytic)

<50%
(In between)

100%
(Mostly all
Endophytic)



1 Point

2 Point

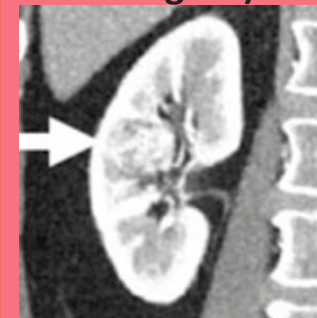
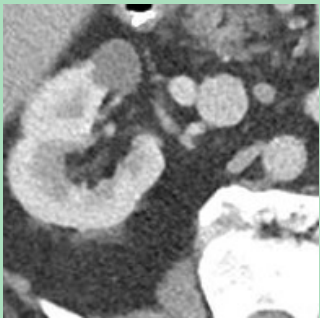
3 Point

N: Nearness

≥7mm
(Cortical)

4-7mm
(Collecting system
may be entered
during PN)

< 4 mm
(Collecting system
will be entered
during PN)

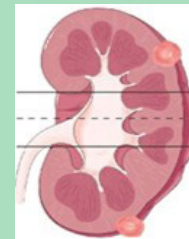


1 Point

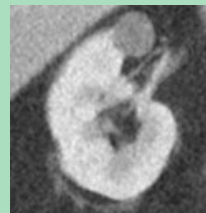
2 Point

3 Point

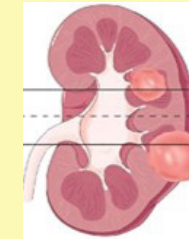
L: Location



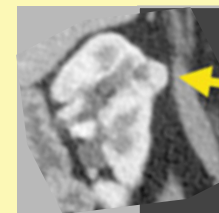
Polar



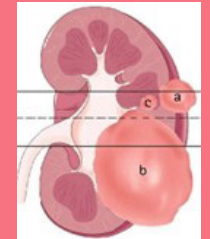
1 Point



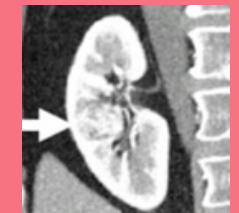
In between



2 Point



Level of Hilum



3 Point